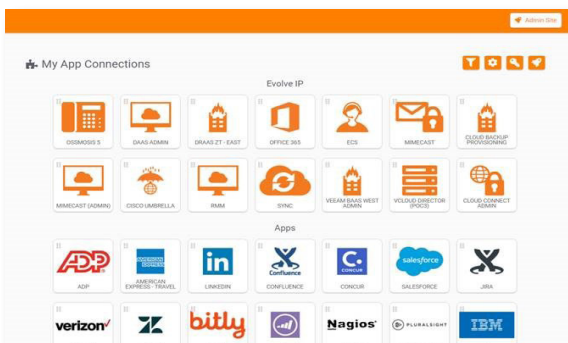


## Clearlogin™

Clearlogin is a cloud-based Identity Access Management (IAM) platform designed to unify all business applications into one centralized dashboard, greatly simplifying IT administration while dramatically improving the log-in experience for end users. The solution includes access management, identity management, multi-factor authentication, branding of the user login pages, data visualization and reporting.

*According to the 10th edition of the Verizon Data Breach Investigations Report, 81 percent of hacking-related breaches leveraged stolen and/or weak passwords.*



### Benefits:

- Reduces Help Desk costs
- Boosts productivity
- Improves compliance and security capabilities
- Facilitates B2B collaboration
- Improves ease in account disabling

**As cloud adoption continues to increase, and more applications move online, password and identity concerns will loom large for organizations not deploying IAM. Not only are these firms placing themselves at significant risks for hacking, they may be facing compliance breaches.**

Clearlogin mitigates the chances of any breach by integrating powerful tools for identification, access and warning. The software integrates with countless third-party tools which boost its performance and ability. Administrators can implement strict access procedures and then monitor all the login activities with the help of a user-friendly dashboard. With a centralized login platform, Clearlogin ensures that not only the login issues are minimized but also the security of sensitive accounts is enhanced.

### Evolve IP's Clearlogin - Standard Features:

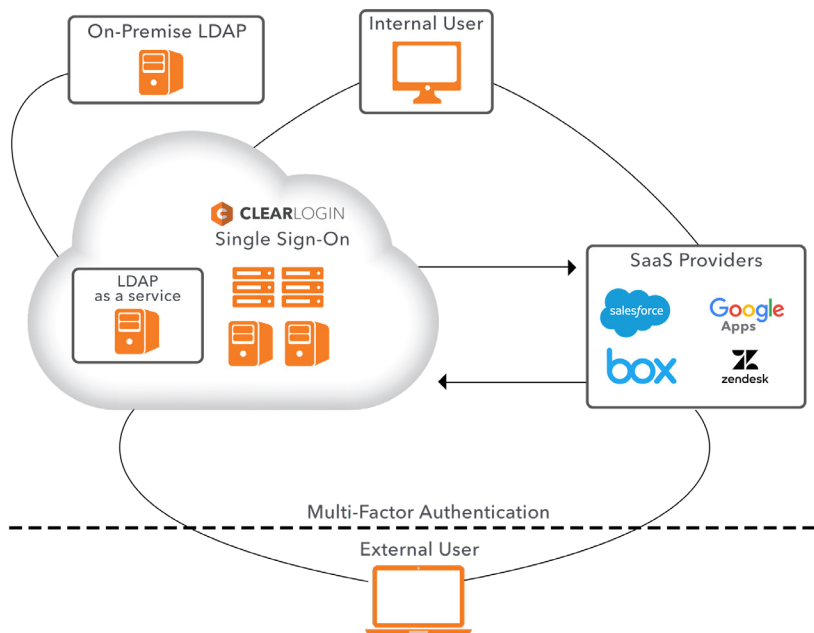
- **OneCloud™ Application Dashboard** - Securely log in once to access the apps you leverage every day, enable multifactor authentication, manage groups and monitor user access.
- **Password Management** - Easily implement strong password policies that also streamline access for your users. Clearlogin offers zero-knowledge password management that increases security while minimizing login issues.
- **Multi-Factor Authentication** - Requiring strong passwords isn't always enough to keep sensitive data secure. Configure multi-factor authentication for an additional layer of security that plugs leaks and halts spoofing attacks.
- **Employee-Driven, Secure Password Reset** - Save hours of Help Desk time, mitigating login issues by allowing users to reset their forgotten passwords.
- **Clearlogin Anywhere™** - An easy-to-use JavaScript embed code for any website, *Clearlogin Anywhere* delivers powerful identity management to the enterprise - with minimal to no custom coding.
- **A Clean, Custom and Secure IT Dashboard** - Users need quick access to enterprise applications. IT administrators want full visibility and control over application access. With Clearlogin's dashboard, organizations can have both.
- **Complete Visibility With Real-Time Access Reports** - Clearlogin's reporting interface provides a visual depiction of when and how data is being accessed, making it easy to detect suspicious activity. IT can run detailed reports on user location, browser data, or specific actions like password resets and failed login attempts.

## One Cloud. One Identity. Unlimited Applications

To centralize enterprise identity management, get control of your users and lower operational burdens, Clearlogin offers three plans with prices varying in line with the added features.

	Basic	Standard	Enterprise
Monthly Subscription Per User (Business)	\$1.00	\$2.00	\$3.00
Monthly Subscription Per User (Education)	\$0.12	\$0.20	\$0.33
Identity Source(s)	1	2	Unlimited
App Connections ( <i>beyond Evolve IP apps</i> )	1	5	Unlimited
IP-Based Whitelisting & Security Policy Management	X	X	X
Password Synchronization	X	X	X
Custom Branded Login Page	X	X	X
Google Apps: Support for Multiple Domains	X	X	X
Retention for Analytics & Reporting	7 Days	6 Months	Unlimited
Multi-Factor Authentication		X	X
Clearlogin Anywhere		X	X
Password Reset & Forgotten Credentials Management			X
Maintain AD/LDAP replication instance within Clearlogin's infrastructure	Optional Service (\$100 monthly recurring cost)		

The following diagram shows how Clearlogin authenticates users via an LDAP server (typically Active Directory) or other Identity Provider (IdP)/Directory Service\* and then logs the user into their SSO-based apps.



\* Clearlogin requires the use of external directories for user authentication i.e. Google Apps, LDAP and Microsoft Active Directory. Azure AD is not currently supported.

## Built for IT Admins

A Clearlogin Evolve IP License is included for Admins users of Evolve IP solutions. The Admin license includes all the Evolve IP apps used by the client as well as the OSSmosis Identity source. The process of upgrading to Basic, Standard or Enterprises licenses is simple and extends the benefits across the organization.

Clearlogin Evolve IP License Overview:

- For IT Admins
- Includes Evolve IP Apps
- OSSmosis 5 Identity Source
- Easily upgrade to Basic, Standard or Enterprises Clearlogin Plans

## About Evolve IP

The Cloud is no longer about buying individual services. It is now about building a strategy around multiple cloud services and integrating them together to make IT more efficient. Evolve IP delivers customized strategies and integrated services for both cloud computing and communications; solutions that are designed to work together, with your current infrastructure, and with the applications you already use in your business. Disaster Recovery, Contact Center, Unified Communications, Desktops and Infrastructure ... Experience Cloud as a Strategy™.

Evolve IP is the only cloud service provider with a proprietary IAM service, Clearlogin, and the portal unifies our analyst-acclaimed solutions with the most common Web-based/SaaS applications on the market today.

Learn more:

<https://sommita.net/contact-us/>