

Secure Access Service Edge (SASE)

Unite SD-WAN and security in one cloud solution

Product Sheet: Managed SD-WAN Secure



Gartner coined the term Secure Access Service Edge (SASE, pronounced “sassy”) to describe the combination of SD-WAN capabilities with cybersecurity functions. The advantage of SASE for businesses is unified IT operations with cloud-based security and end-to-end network visibility from one provider.

A pragmatic approach to secure networking

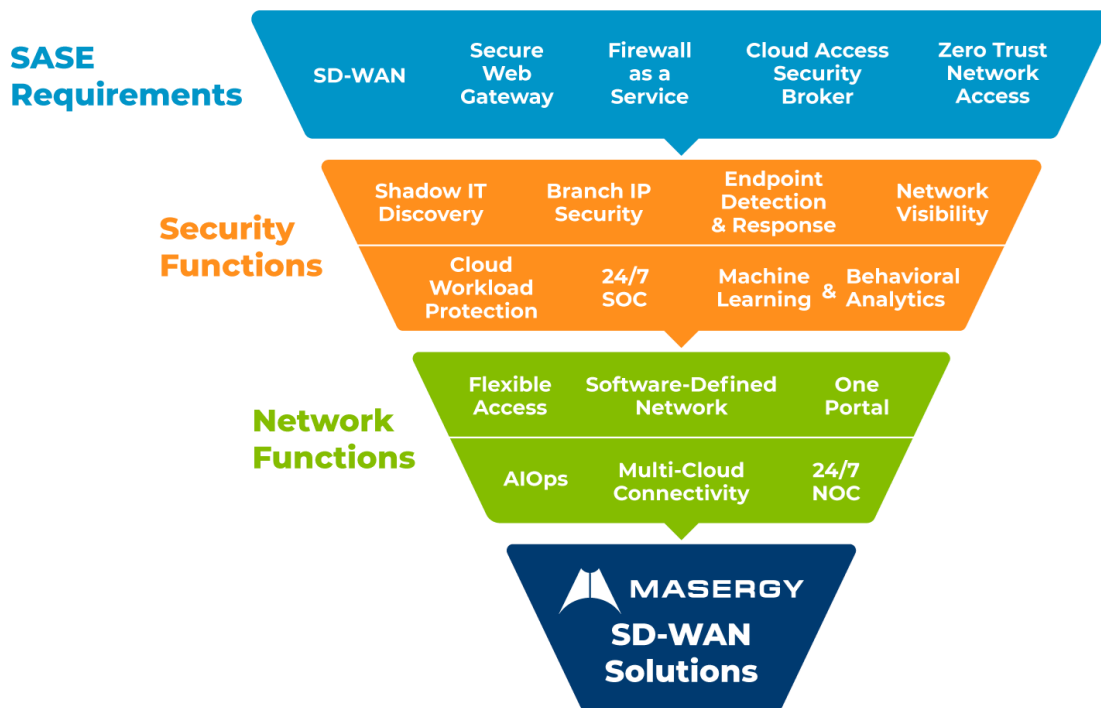
Masergy’s Managed SD-WAN Secure solutions adhere to the key tenets of Gartner’s SASE model. Masergy combines SD-WAN connectivity with a secure web gateway, cloud-based firewalls, an automated cloud access security broker (CASB), zero trust network access, and end-to-end analytics in one offering.

When you need to quickly deploy branch locations or need connectivity for thousands of employees, Masergy leverages Fortinet® hardware with next-generation firewalls in the cloud or on the edge—it’s your choice. Certified security analysts in Masergy’s own global operations centers detect and respond 24/7 to threats at every location. And because SASE focuses on cloud and Zero Trust, Masergy gives you three levels of security services that expand with CASB, deep network visibility, and identity-based WAN analytics.

Benefits

- Simplify IT with network and security services in one cloud platform from one provider with a fast and scalable deployment
- Reduce costs with a single cloud-native solution rather than buying and managing multiple point products and services
- Enable your employees to work from anywhere without ever sacrificing performance for security

How Masergy delivers on the key tenets of SASE



Contact Us: [□](#) [□](#)

INFO.SOMMITA@NET

Consistency across the network and security

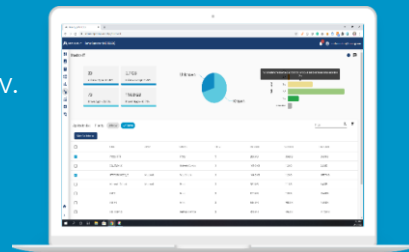
Masergy's SD-WAN Secure solutions are designed to create an enterprise-wide standard for network and security, helping companies unify IT operations and adhere to convergence best practices.

- Consistent security policies across all SD-WAN devices and security alert metrics in one portal
- Simplified network segmentation and limitless virtual private networks for multi-cloud environments
- Centralized cloud-based deployments for a pervasive IT security posture across your multi-tenant WAN and LAN infrastructure

One portal for both network and security analytics

A customizable dashboard displays your global network, SD-WAN, and cloud environments along with security alerts and analytics in a unified view.

- **Shadow IT Discovery:** Automatically scans and identifies potential threats from cloud-based SaaS applications running on your network
- **Identity-Based WAN Analytics:** Detailed per-user statistics across all applications are essential in developing a Zero Trust security strategy
- **Full network visibility:** See east/west and north/south (server-to-server) traffic within the data center and client-to-server traffic outside the data center network



SASE architecture matters and Masergy's stands out

The degree to which the underlying SASE architecture is standardized distinguishes seamless SASE platforms from mere solution sets where vendors have cobbled together parts and pieces. Masergy's SD-WAN capabilities share a common infrastructure.

- Standardized SD-architecture: Masergy's global, private network is entirely software defined and built on a ubiquitous SD-architecture all around the world
- Common infrastructure: Every newly added SD-WAN feature and application interoperates as equal partners on the same operating system
- Transparent interoperability: One transparent ecosystem combines Masergy's SD-network, direct cloud connections, and security-centric Fortinet hardware, to deliver superior performance

SD-WAN with security built-in

- Next-gen cloud firewalls built into the Fortinet device
- CASB, cloud workload protection, and secure web gateway
- Security analytics including machine learning and behavioral analytics
- Antivirus, intrusion detection/prevention, web filtering, and data loss prevention
- Unified threat management and response as well as endpoint detection and response with 24/7 SOC services
- Optional suite of Managed Security services